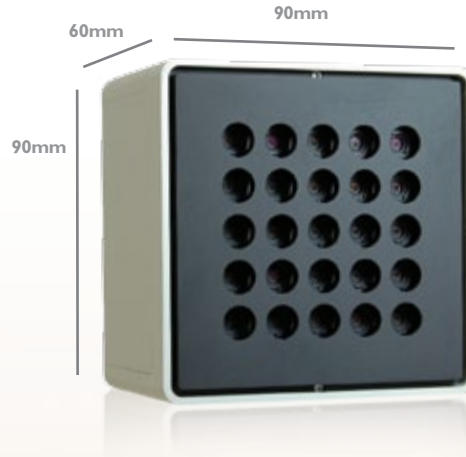


ProFUSION 25

5X5 DIGITAL CAMERA ARRAY

- The world's first PCI Express camera
- More than 200 megabytes per second
- 25 VGA cameras in 5x5 arrangement
- High quality lenses
- Software for plug and play use

ProFUSION 25, designed and manufactured by ViewPLUS Inc., is a 5x5 camera array system with 25 VGA resolution cameras housed inside a very compact body. It is also the world's first camera connected with a PCI Express external cable. This connection provides more than 200MB/s effective bandwidth and transfers all 25 images at 25 FPS to the PC.



SPECIFICATIONS	
Arrangement	5x5 with 12mm spacing
Imaging Sensor	Micron MT9V022 1/3" wide-VGA CMOS with global shutter
Output Resolution	640x480x25, 8-bit raw digital data
Frame Rate	25 FPS
Gain and Shutter	Auto/manual gain/shutter modes
Interface	PCI Express x1 External Cable
Power Consumption	15W
Lens	Mega Pixel Resolution Micro Lens
Focal Length	5.34mm (F/2.8)
Field of View	36.8°HFOV, 28.0°VFOV
IR Cut Filter	Color Model Only
Dimensions	90 x 90 x 60 mm
Mass	500 grams
Compliance	RoHS
This product is intended to be used exclusively as industrial, commercial or medical test equipment. Any other usage is in violation of FCC Part 15	
Warranty	One (1) Year

INTERFACE CARDS	
Desktop PC	PCI Express x1: PCIe x1 external cable connector and camera power connector
Notebook PC	ExpressCard/34: PCIe x1 external cable connector and camera power connector

Recommended System Configuration:

- Intel Core 2 Duo 2GHz or compatible processor
- 1GB of RAM
- Video card with more than 256MB video memory with programmable shader
- Windows XP Service Pack 2
- PCI Express x1 compatible slot or Express Card/34 slot
- Microsoft Visual Studio 2005 (compile and run sample code)

Profusion 25 System Components

- ProFUSION 25 5x5 camera array system
- ProFUSION SDK (C/C++ API and device drivers) CD
- PCI Express x1 External Cable 3m (for use with ProFUSION 25 only)
- Power supply cable
- Interface card for Desktop PC
- Interface card for Notebook PC
- AC Adapter



Options

- ProFUSION SDK for Macintosh
- ProFUSION SDK for Linux

Model Numbers

- ProFUSION-25M: BW Type
- ProFUSION-25C: Color Type