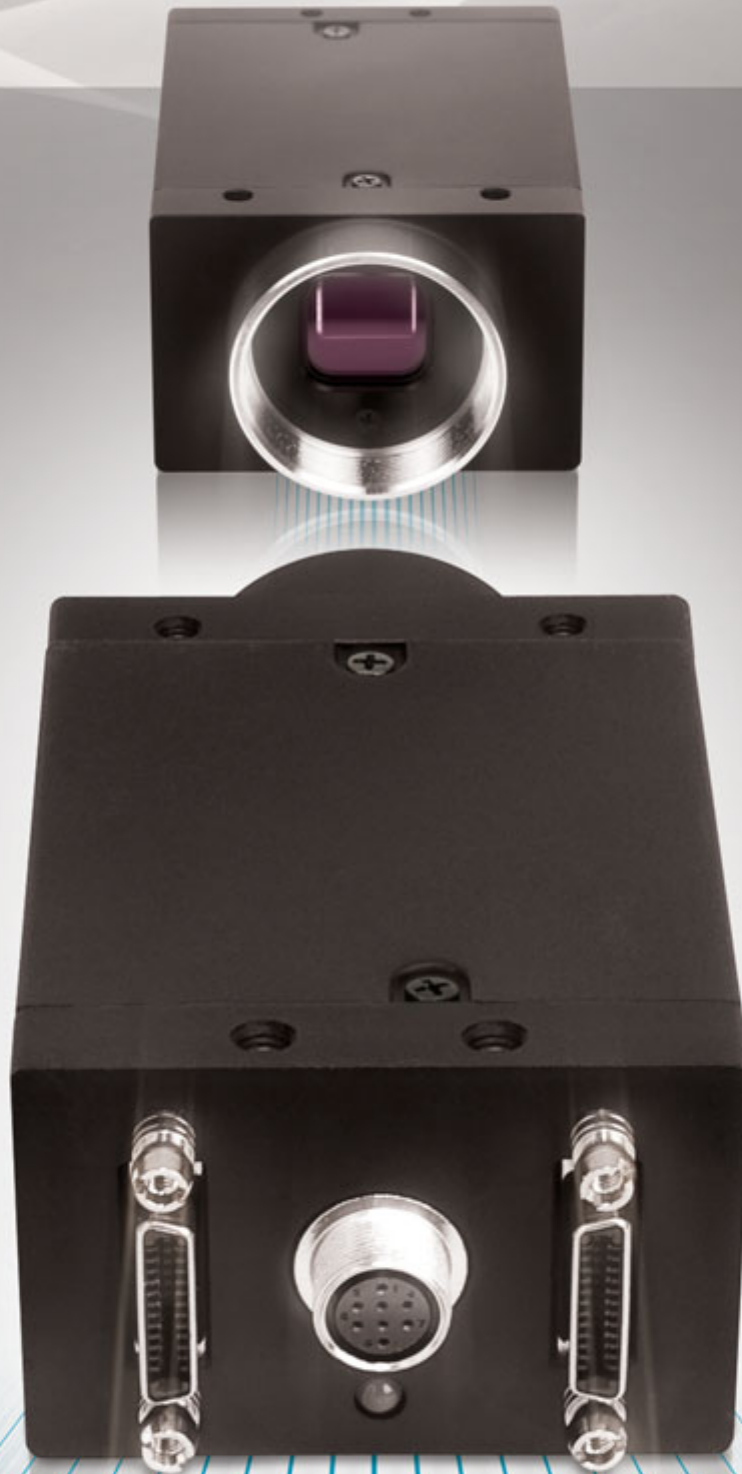


GAZELLE™

ULTRA-FAST + COMPACT + COST-EFFECTIVE



CAMERA
Link

 **POINT GREY**
Innovation in Imaging

Gazelle™

- High resolution, high frame rate CMOS image sensors
- New CMOSIS sensors, 2 MP at 280 FPS and 4 MP at 150 FPS
- Camera Link Base, Full configurations
- Compact 44 x 29 x 58 mm case with C-mount lens holder

The new Gazelle series of Camera Link cameras delivers an unsurpassed combination of size, speed, and price. The Gazelle is based on the same compact form factor as the popular Grasshopper camera and is designed to accommodate a large selection of high resolution, high frame rate image sensors.



M2 screwholes for secure connection

2.0 MP	CMOSIS CMV2000 CMOS, 2/3", 5.5 x 5.5 µm Global shutter	2048 x 1088 at 280 FPS
4.0 MP	CMOSIS CMV4000 CMOS, 1", 5.5 x 5.5 µm, Global shutter	2048 x 2048 at 150 FPS



Analog-to-Digital Converter	On-chip 10-bit
Video Data Output	8-bit (Full 8-tap mode) or 10-bit (Base 2-tap mode) Factory default setting: 8-bit
Image Data Formats	Mono8, Mono10
Color Processing	N/A
Digital Interface	Camera Link LVDS, Base (2 tap) and Full (8 tap) configurations
Transfer Rates	2.38 GBits/sec
Partial Image Modes	Single or multiple region of interest modes
White Balance	N/A
General Purpose I/O Ports	8-pin Hirose HR25 GPIO connector opto-isolated pins for trigger, pwm and strobe, bi-directional pins for power, trigger and strobe
Gain Control	Analog and digital programmable via software. Range: 32 - 64 (analog), 0 - 64 (digital)
Exposure	74.175 µs - 54 s (Full 8-tap mode)
Gamma/LUT	N/A
Synchronization	via external trigger, software trigger
External Trigger Modes	Single-shot, bulb shutter trigger mode
Power Consumption	Voltage: 12 V +/- 10 %; Power: Max 6 W at 12 V
Dimensions (L x W x H)	44mm x 29mm x 58mm (excluding lens holder and connectors)
Mass	90g (without optics or tripod mounting bracket)
Memory Storage	N/A
Memory Channels	2 memory channels for user configuration sets
Camera Specification	Camera Link
Lens Mount	C-mount
Emissions Compliance	CE, FCC, RoHS
Operating Temperature	-10° to 50°C
Storage Temperature	-30° to 60°C
Warranty	2 years

SPECIFICATIONS ARE PRELIMINARY AND SUBJECT TO CHANGE WITHOUT NOTICE
PRELIMINARY