

5-Port IEEE-1394b Hub

FFWB-HUB-5PORT



- **Five 800Mb/s IEEE-1394b locking ports**
- **Compact industrial grade metal case**
- **Locking connections for 1394b cables**
- **8-32V external power input, 1A per port**
- **Multiple mounting options**



Part Number
FFWB-HUB-5PORT

The FirePRO™ 5-port IEEE-1394b hub, designed and manufactured by Point Grey Research, is useful for maximizing the performance of large camera arrays in the most demanding imaging environments. It is a reliable and cost-effective solution for applications that require devices to be extended beyond the standard 4.5m cable length, external power to be supplied, or additional 1394b ports.

The hub's design incorporates locking 9-pin 1394b bilingual ports, multiple mounting points, and an external power connector to ensure a secure physical connection and a stable 1394b network.

FEATURES

- Five (5) bilingual 9-pin 1394b 800Mb/s (S800) ports
- 100, 200, 400 and 800Mb/s transfer rates
- Supports IEEE P1394b revision 1.20 at 1Gb signaling rates
- Backward compatible with 1394-1995 and 1394a-2000
- Fully interoperable with Firewire™ and i.LINK™
- Front and rear mounting options prevent hub movement
- Port protection minimizes ESD effects and PHY errors
- External power input (Digi-Key PN#CP-002AHPJCT-ND), standard barrel connector (Digi-Key PN# CP3-1000-ND)
- Status LED to indicate power and device connection
- Supports Plug and Play and hot swapping

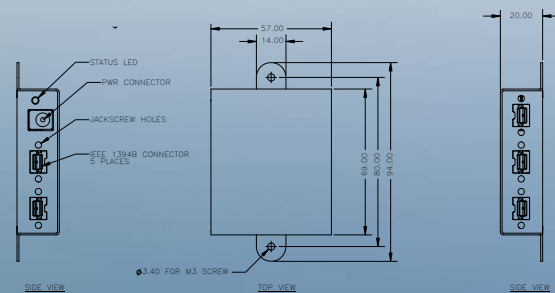
General Specifications	
Dimensions	57 x 94 x 20mm (WxDxH)
Mass	TBA
Power input/output	8-30V / 1A output per port at 12V
Power consumption	Max 1.5W at 12V
Chipset	TI TSB81BA3D physical layer
Compliance	RoHS, FCC Class B, CE
Mounting	Front / rear, M3x4mm screw holes
Operating temperature	0°C to 45°C
Storage temperature	-30°C to 60°C
Warranty	2 years



COMPATIBILITY

- All Point Grey 1394 camera products
- All Point Grey FirePRO™ products

DIMENSIONS



SAMPLE CONFIGURATION

- 16 cameras streaming 160MB/s image data into a single card
- Grasshoppers on the same 1394 bus auto sync
- MultiSync software syncs cameras across multiple buses

